

# Joe Farrell's Improvisation on *Moon Germs* by Joe Farrell

from *Moon Germs*, 1972 CTI 6023

Transcribed by AJ Kluth

Joe Farrell - Soprano Saxophone  
Herbie Hancock - Electric Piano  
Stanley Clarke - Electric Bass  
Jack DeJohnette - Drums

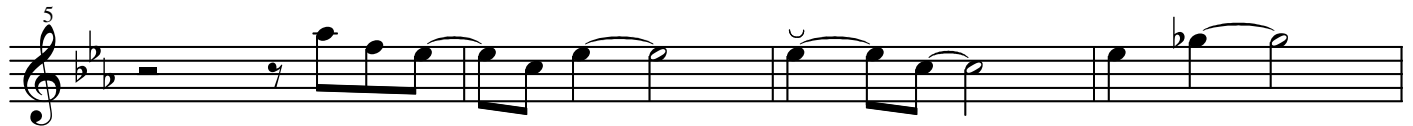
**Bb Soprano Saxophone Key of F**

$\text{♩} = 228$

(0.00) F  
(0.13)



(0.04) Bb  
(0.17) F



(0.09) C#  
(0.21) C F



*1st chorus*

(0.26) F



(0.30) Bb F



(0.34) C# C F



*2nd chorus*

(0.38) F



(0.42) *B $\flat$*  *F*

30

3 3 3

(0.46) *C $\sharp$*  *C* *F*

34

3 3 3 3 3 3

(0.51) *3rd chorus*  
*F*

38

3

(0.55) *B $\flat$*  *F*

42

3 3

(0.59) *C $\sharp$*  *C*

46

3 3 3

(1.03) *4th chorus*  
*F*

50

3 3 3 3

(1.07) *B $\flat$*  *F*

54

3

(1.12) *C $\sharp$*  *C* *F*

58

3 3 3 3

(1.16) *5th chorus*  
*F*

62

(1.20)  $B\flat$  F

(1.23)  $C\sharp$  C F

6th chorus

(1.28) F

(1.30)

(1.33)  $B\flat$

(1.35) F

(1.37)  $C\sharp$  C F

7th chorus

(1.41) F

(1.45)  $B\flat$  F

(1.49) C# C F

94

8th chorus

(1.53) F

98

(1.57) Bb F

102

(2.01) C# C

106

(2.04) F

108

(2.06) F

110

(2.10) Bb F

114

(2.14) C# C F

118

10th chorus

(2.18) F

122

(2.22)  $B^b$  F

(2.26)  $C^\sharp$  C F

*11th chorus*

(2.30) F

(2.35)  $B^b$  F

(2.39)  $C^\sharp$  C F

*12th chorus*

(2.43) F

(2.47)  $B^b$  F

(2.51)  $C^\sharp$  C F

*13th chorus*

(2.55) F

(2.59) B $\flat$

162

3

(3.01) F

164

3 5

(3.03) C $\sharp$  C F

166

14h chorus

(3.08) F

170

15h chorus

(3.12) B $\flat$

174

3 3 3

(3.14) F

176

3 3 3

(3.16) C $\sharp$  C

178

3 3

(3.18) F

180

6 6 5

15h chorus

(3.20) F

182

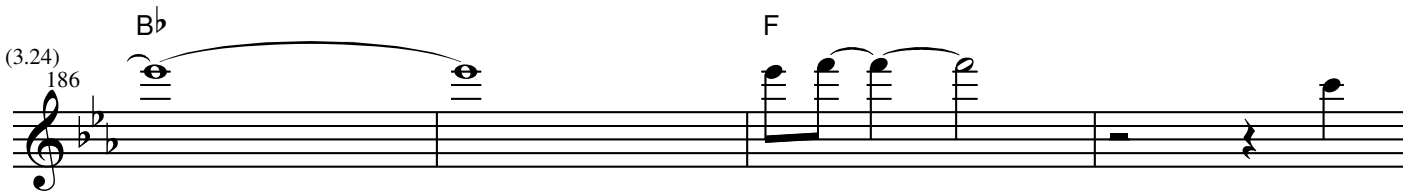
16h chorus

(3.22) 184



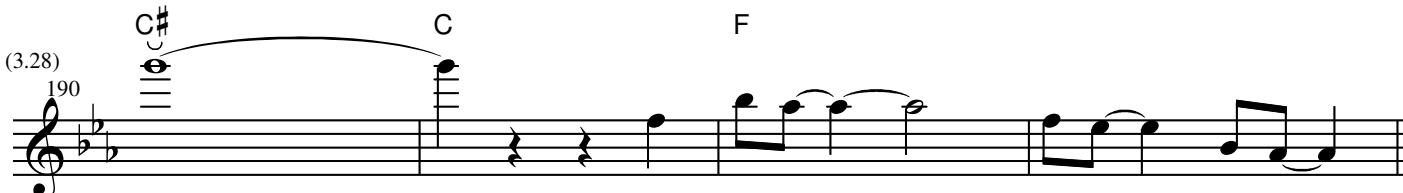
(3.24) 186

B $\flat$  F



(3.28) 190

C $\sharp$  C F

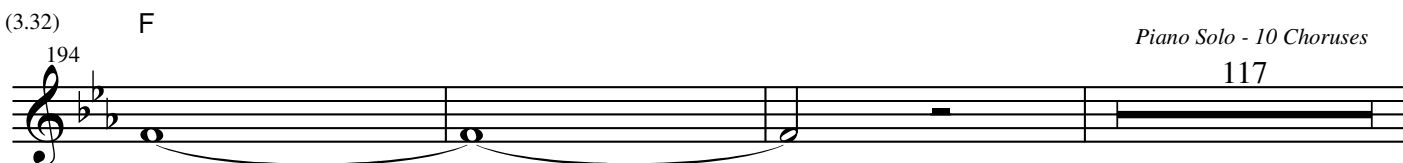


(3.32) 194

F

*Piano Solo - 10 Choruses*

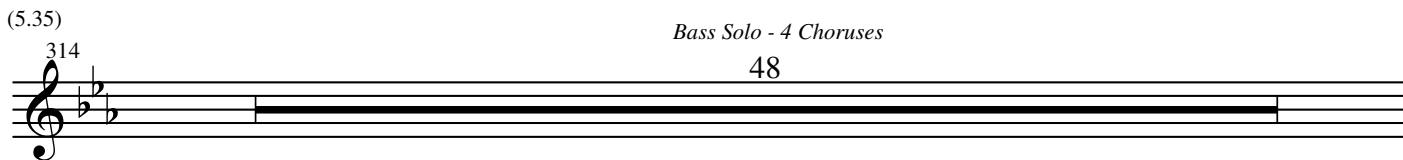
117



(5.35) 314

*Bass Solo - 4 Choruses*

48



(6.24) 362

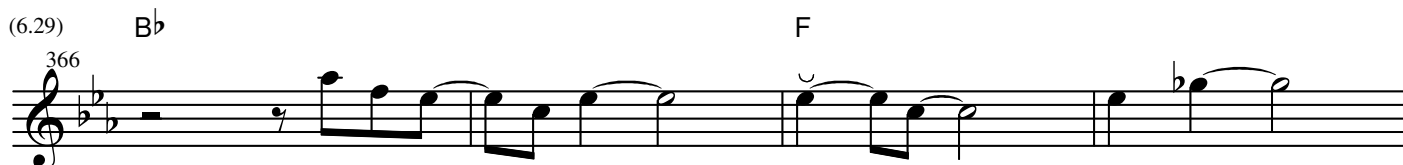
F

*Head Out*



(6.29) 366

B $\flat$  F



(6.33) 370

C $\sharp$  C F

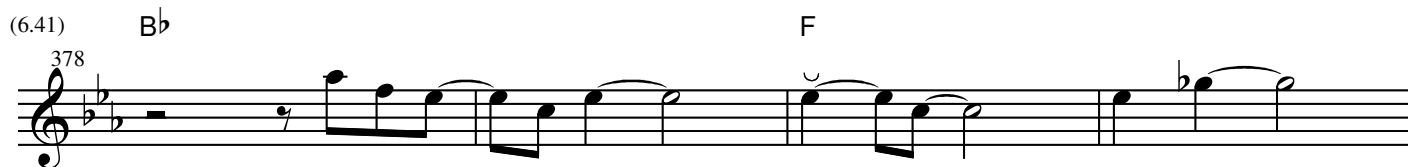


(6.37) 374

F



(6.41) B $\flat$  F



(6.46) C $\sharp$  C F



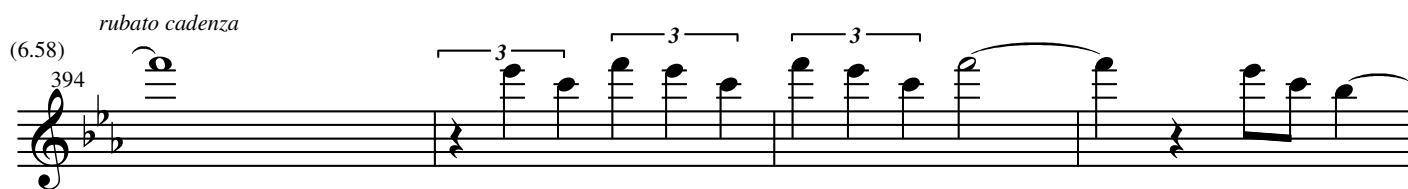
(6.50) C $\sharp$  C F



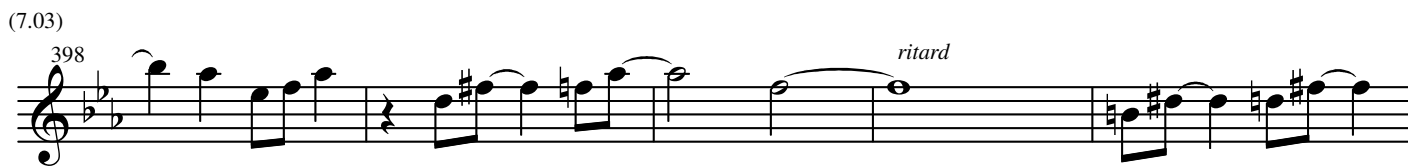
(6.54) C $\sharp$  C F



(6.58) *rubato cadenza*



(7.03) 398 *ritard*



(7.10) 403

